

“Interim Report for CDEA Agreement Number 17-0419-000-SA”

Title of project: Field testing transgenic grapevine rootstocks expressing CAP and PGIP proteins.

Principal investigators (PI):

Abhaya M. Dandekar, Department of Plant Sciences, University of California, Davis, CA 95616 Phone: 530-752-7784; fax: 530-752-0382; email: amdandekar@ucdavis.edu

Cooperators

Ana M. Ibáñez. Department of Plant Sciences, University of California, Davis, CA 95616 Phone: 530-752-5325; fax: 530-752-0382; email: amibanez@ucdavis.edu

Aaron Jacobson, Department of Plant Sciences, University of California, Davis, CA 95616 Phone: 530-752-5325; fax: 530-752-0382; email: ajacobson@ucdavis.edu

Time period covered by the report: July 2016 to June 2018.

Introduction

The focus of this study is to evaluate the rootstock-based expression of chimeric antimicrobial proteins (CAP; Dandekar et al., 2012a) and polygalacturonase inhibitory protein (PGIP; Agüero et al., 2005, 2006) to provide transgraft protection of the scion grapevine variety against PD. Rootstocks (Thompson Seedless, TS) expressing these proteins individually are currently being evaluated in the field, this part of the study was concluded this year. Since TS is not a rootstock these genes must be tested in a commercially relevant rootstock. Methods to successfully transform two commercially relevant rootstocks 101-14 and 1103 (Christensen, 2003) was successfully developed (Dandekar et al., 2011; 2012b) and the method was further improved by David Tricoli in the plant transformation facility at UC Davis. The original NE-CB CAP construct (Dandekar 2012a) was improved by identifying grapevine-derived components (Chakraborty et al., 2013; 2014b). The bacterial surface (LPS-lipopolysaccharide) binding NE component (neutrophil elastase) was replaced with P14a protein from *Vitis shuttleworthii* that also displays serine protease activity like NE (Chakraborty et al., 2013; Dandekar et al., 2012c; 2013). The antimicrobial component CB (cecropin B) was replaced with HAT52 and/or PPC20 that were identified using novel bioinformatics tools developed by us (Chakraborty et al., 2013; 2014a) and the efficacy of the selected peptides were verified for their ability to kill *Xf* cells (Chakraborty et al., 2014b). In addition to the original NE-CB CAP (CAP-1) five additional CAP constructs were developed that contained 35s OM/RAMY/Flag CAP (CAP-2); VsP14a (CAP-3); VsP14a-CB (CAP-4), VsP14a-HAT52 (CAP-5) and VsP14a-PPC20 (CAP-6; Dandekar et al., 2012c; 2013; 2014). These transgenic CAP-expressing rootstocks testing in the greenhouse and field started in fall 2016. The additional CAP constructs that will be tested are aimed to address the concern that the protein components of the present CAP-1 have a non-plant origin. Transformation of these 5 CAP constructs into the 101-14 and 1103 rootstock backgrounds was initiated in 2014 greenhouse testing was initiated in 2016 with field testing 2018 onward. The field introduction of these rootstocks is aimed at evaluating different lines to identify those with good efficacy in protecting grafted, sensitive scion cultivar Chardonnay from developing PD.

List of objectives

The major goal is to field-test transgenic rootstocks to identify lines that can transgraft-protect a scion variety from Pierce's disease (PD) development.

Objective 1. Complete the current round of efficacy testing of *in planta*-expressed chimeric antimicrobial proteins for the ability to clear *Xf* infection in xylem tissue and through the graft union in grapevines grown under field conditions.

Activity 1. Complete and conclude current field tests.

Activity 2. Conduct greenhouse and field evaluation of CAP-expressing 110-14 and 1103 rootstocks.

Description of activities conducted to accomplish each objective, and summary of accomplishments and results for each objective

Objective 1. Complete the current round of efficacy testing of *in planta*-expressed chimeric antimicrobial

proteins for the ability to clear *Xf* infection in xylem tissue and through the graft union in grapevines grown under field conditions.

Activity 1. Complete and conclude current field tests.

At the Solano County site, half of the non-grafted transgenic lines were manually inoculated as described (Almeida et al. 2003) on July 13, 2011, and the rest on May 29, 2012. Half of the grafted transgenic lines were also manually inoculated on a later date. Nongrafted and grafted grapevines at the Solano site that were not previously inoculated were manually inoculated on June 17, 2013, completing the inoculations of all grapevines at this location. On May 27, 2014, and May 27, 2015, following the recommendation of the Product Development Committee (PDC) of the Pierce’s Disease Control Program, at least four new canes per year from all grafted transgenic and control plants at this site were mechanically inoculated with *Xf*. Inoculation dates from 2012 to 2015 are shown in a color-coded map (Table 1, Figure 1).

Table 1. Solano County grape field map, color-coded by *Xf* inoculation date, from 2012 to 2015.

Vine	1	2	3	4	5	6	7	8	9	10	11	12	13	14	15	16	17	18	19	20	21	22	23	24	25																																																		
Row 9	<div></div> <div></div> <div></div> <div></div> <div></div> <div></div> <div></div> <div></div> <div></div> <div></div> <div></div> <div></div> <div></div> <div></div> <div></div> <div></div> <div></div> <div></div> <div></div> <div></div> <div></div> <div></div> <div></div> <div></div> <div></div> <div></div>	<div></div> <div></div> <div></div> <div></div> <div></div> <div></div> <div></div> <div></div> <div></div> <div></div> <div></div> <div></div> <div></div> <div></div> <div></div> <div></div> <div></div> <div></div> <div></div> <div></div> <div></div> <div></div> <div></div> <div></div> <div></div> <div></div>	<div></div> <div></div> <div></div> <div></div> <div></div> <div></div> <div></div> <div></div> <div></div> <div></div> <div></div> <div></div> <div></div> <div></div> <div></div> <div></div> <div></div> <div></div> <div></div> <div></div> <div></div> <div></div> <div></div> <div></div> <div></div> <div></div>	<div></div> <div></div> <div></div> <div></div> <div></div> <div></div> <div></div> <div></div> <div></div> <div></div> <div></div> <div></div> <div></div> <div></div> <div></div> <div></div> <div></div> <div></div> <div></div> <div></div> <div></div> <div></div> <div></div> <div></div> <div></div> <div></div>	<div></div> <div></div> <div></div> <div></div> <div></div> <div></div> <div></div> <div></div> <div></div> <div></div> <div></div> <div></div> <div></div> <div></div> <div></div> <div></div> <div></div> <div></div> <div></div> <div></div> <div></div> <div></div> <div></div> <div></div> <div></div> <div></div>	<div></div> <div></div> <div></div> <div></div> <div></div> <div></div> <div></div> <div></div> <div></div> <div></div> <div></div> <div></div> <div></div> <div></div> <div></div> <div></div> <div></div> <div></div> <div></div> <div></div> <div></div> <div></div> <div></div> <div></div> <div></div> <div></div>	<div></div> <div></div> <div></div> <div></div> <div></div> <div></div> <div></div> <div></div> <div></div> <div></div> <div></div> <div></div> <div></div> <div></div> <div></div> <div></div> <div></div> <div></div> <div></div> <div></div> <div></div> <div></div> <div></div> <div></div> <div></div> <div></div>	<div></div> <div></div> <div></div> <div></div> <div></div> <div></div> <div></div> <div></div> <div></div> <div></div> <div></div> <div></div> <div></div> <div></div> <div></div> <div></div> <div></div> <div></div> <div></div> <div></div> <div></div> <div></div> <div></div> <div></div> <div></div> <div></div>	<div></div> <div></div> <div></div> <div></div> <div></div> <div></div> <div></div> <div></div> <div></div> <div></div> <div></div> <div></div> <div></div> <div></div> <div></div> <div></div> <div></div> <div></div> <div></div> <div></div> <div></div> <div></div> <div></div> <div></div> <div></div> <div></div>	<div></div> <div></div> <div></div> <div></div> <div></div> <div></div> <div></div> <div></div> <div></div> <div></div> <div></div> <div></div> <div></div> <div></div> <div></div> <div></div> <div></div> <div></div> <div></div> <div></div> <div></div> <div></div> <div></div> <div></div> <div></div> <div></div>	<div></div> <div></div> <div></div> <div></div> <div></div> <div></div> <div></div> <div></div> <div></div> <div></div> <div></div> <div></div> <div></div> <div></div> <div></div> <div></div> <div></div> <div></div> <div></div> <div></div> <div></div> <div></div> <div></div> <div></div> <div></div> <div></div>	<div></div> <div></div> <div></div> <div></div> <div></div> <div></div> <div></div> <div></div> <div></div> <div></div> <div></div> <div></div> <div></div> <div></div> <div></div> <div></div> <div></div> <div></div> <div></div> <div></div> <div></div> <div></div> <div></div> <div></div> <div></div> <div></div>	<div></div> <div></div> <div></div> <div></div> <div></div> <div></div> <div></div> <div></div> <div></div> <div></div> <div></div> <div></div> <div></div> <div></div> <div></div> <div></div> <div></div> <div></div> <div></div> <div></div> <div></div> <div></div> <div></div> <div></div> <div></div> <div></div>	<div></div> <div></div> <div></div> <div></div> <div></div> <div></div> <div></div> <div></div> <div></div> <div></div> <div></div> <div></div> <div></div> <div></div> <div></div> <div></div> <div></div> <div></div> <div></div> <div></div> <div></div> <div></div> <div></div> <div></div> <div></div> <div></div>	<div></div> <div></div> <div></div> <div></div> <div></div> <div></div> <div></div> <div></div> <div></div> <div></div> <div></div> <div></div> <div></div> <div></div> <div></div> <div></div> <div></div> <div></div> <div></div> <div></div> <div></div> <div></div> <div></div> <div></div> <div></div> <div></div>	<div></div> <div></div> <div></div> <div></div> <div></div> <div></div> <div></div> <div></div> <div></div> <div></div> <div></div> <div></div> <div></div> <div></div> <div></div> <div></div> <div></div> <div></div> <div></div> <div></div> <div></div> <div></div> <div></div> <div></div> <div></div> <div></div>	<div></div> <div></div> <div></div> <div></div> <div></div> <div></div> <div></div> <div></div> <div></div> <div></div> <div></div> <div></div> <div></div> <div></div> <div></div> <div></div> <div></div> <div></div> <div></div> <div></div> <div></div> <div></div> <div></div> <div></div> <div></div> <div></div>	<div></div> <div></div> <div></div> <div></div> <div></div> <div></div> <div></div> <div></div> <div></div> <div></div> <div></div> <div></div> <div></div> <div></div> <div></div> <div></div> <div></div> <div></div> <div></div> <div></div> <div></div> <div></div> <div></div> <div></div> <div></div> <div></div>	<div></div> <div></div> <div></div> <div></div> <div></div> <div></div> <div></div> <div></div> <div></div> <div></div> <div></div> <div></div> <div></div> <div></div> <div></div> <div></div> <div></div> <div></div> <div></div> <div></div> <div></div> <div></div> <div></div> <div></div> <div></div> <div></div>	<div></div> <div></div> <div></div> <div></div> <div></div> <div></div> <div></div> <div></div> <div></div> <div></div> <div></div> <div></div> <div></div> <div></div> <div></div> <div></div> <div></div> <div></div> <div></div> <div></div> <div></div> <div></div> <div></div> <div></div> <div></div> <div></div>	<div></div> <div></div> <div></div> <div></div> <div></div> <div></div> <div></div> <div></div> <div></div> <div></div> <div></div> <div></div> <div></div> <div></div> <div></div> <div></div> <div></div> <div></div> <div></div> <div></div> <div></div> <div></div> <div></div> <div></div> <div></div> <div></div>	<div></div> <div></div> <div></div> <div></div> <div></div> <div></div> <div></div> <div></div> <div></div> <div></div> <div></div> <div></div> <div></div> <div></div> <div></div> <div></div> <div></div> <div></div> <div></div> <div></div> <div></div> <div></div> <div></div> <div></div> <div></div> <div></div>	<div></div> <div></div> <div></div> <div></div> <div></div> <div></div> <div></div> <div></div> <div></div> <div></div> <div></div> <div></div> <div></div> <div></div> <div></div> <div></div> <div></div> <div></div> <div></div> <div></div> <div></div> <div></div> <div></div> <div></div> <div></div> <div></div>	<div></div> <div></div> <div></div> <div></div> <div></div> <div></div> <div></div> <div></div> <div></div> <div></div> <div></div> <div></div> <div></div> <div></div> <div></div> <div></div> <div></div> <div></div> <div></div> <div></div> <div></div> <div></div> <div></div> <div></div> <div></div> <div></div>	<div></div> <div></div> <div></div> <div></div> <div></div> <div></div> <div></div> <div></div> <div></div> <div></div> <div></div> <div></div> <div></div> <div></div> <div></div> <div></div> <div></div> <div></div> <div></div> <div></div> <div></div> <div></div> <div></div> <div></div> <div></div> <div></div>	<div></div> <div></div> <div></div> <div></div> <div></div> <div></div> <div></div> <div></div> <div></div> <div></div> <div></div> <div></div> <div></div> <div></div> <div></div> <div></div> <div></div> <div></div> <div></div> <div></div> <div></div> <div></div> <div></div> <div></div> <div></div> <div></div>	<div></div> <div></div> <div></div> <div></div> <div></div> <div></div> <div></div> <div></div> <div></div> <div></div> <div></div> <div></div> <div></div> <div></div> <div></div> <div></div> <div></div> <div></div> <div></div> <div></div> <div></div> <div></div> <div></div> <div></div> <div></div> <div></div>	<div></div> <div></div> <div></div> <div></div> <div></div> <div></div> <div></div> <div></div> <div></div> <div></div> <div></div> <div></div> <div></div> <div></div> <div></div> <div></div> <div></div> <div></div> <div></div> <div></div> <div></div> <div></div> <div></div> <div></div> <div></div> <div></div>	<div></div> <div></div> <div></div> <div></div> <div></div> <div></div> <div></div> <div></div> <div></div> <div></div> <div></div> <div></div> <div></div> <div></div> <div></div> <div></div> <div></div> <div></div> <div></div> <div></div> <div></div> <div></div> <div></div> <div></div> <div></div> <div></div>	<div></div> <div></div> <div></div> <div></div> <div></div> <div></div> <div></div> <div></div> <div></div> <div></div> <div></div> <div></div> <div></div> <div></div> <div></div> <div></div> <div></div> <div></div> <div></div> <div></div> <div></div> <div></div> <div></div> <div></div> <div></div> <div></div>	<div></div> <div></div> <div></div> <div></div> <div></div> <div></div> <div></div> <div></div> <div></div> <div></div> <div></div> <div></div> <div></div> <div></div> <div></div> <div></div> <div></div> <div></div> <div></div> <div></div> <div></div> <div></div> <div></div> <div></div> <div></div> <div></div>	<div></div> <div></div> <div></div> <div></div> <div></div> <div></div> <div></div> <div></div> <div></div> <div></div> <div></div> <div></div> <div></div> <div></div> <div></div> <div></div> <div></div> <div></div> <div></div> <div></div> <div></div> <div></div> <div></div> <div></div> <div></div> <div></div>	<div></div> <div></div> <div></div> <div></div> <div></div> <div></div> <div></div> <div></div> <div></div> <div></div> <div></div> <div></div> <div></div> <div></div> <div></div> <div></div> <div></div> <div></div> <div></div> <div></div> <div></div> <div></div> <div></div> <div></div> <div></div> <div></div>	<div></div> <div></div> <div></div> <div></div> <div></div> <div></div> <div></div> <div></div> <div></div> <div></div> <div></div> <div></div> <div></div> <div></div> <div></div> <div></div> <div></div> <div></div> <div></div> <div></div> <div></div> <div></div> <div></div> <div></div> <div></div> <div></div>	<div></div> <div></div> <div></div> <div></div> <div></div> <div></div> <div></div> <div></div> <div></div> <div></div> <div></div> <div></div> <div></div> <div></div> <div></div> <div></div> <div></div> <div></div> <div></div> <div></div> <div></div> <div></div> <div></div> <div></div> <div></div> <div></div>	<div></div> <div></div> <div></div> <div></div> <div></div> <div></div> <div></div> <div></div> <div></div> <div></div> <div></div> <div></div> <div></div> <div></div> <div></div> <div></div> <div></div> <div></div> <div></div> <div></div> <div></div> <div></div> <div></div> <div></div> <div></div> <div></div>	<div></div> <div></div> <div></div> <div></div> <div></div> <div></div> <div></div> <div></div> <div></div> <div></div> <div></div> <div></div> <div></div> <div></div> <div></div> <div></div> <div></div> <div></div> <div></div> <div></div> <div></div> <div></div> <div></div> <div></div> <div></div> <div></div>	<div></div> <div></div> <div></div> <div></div> <div></div> <div></div> <div></div> <div></div> <div></div> <div></div> <div></div> <div></div> <div></div> <div></div> <div></div> <div></div> <div></div> <div></div> <div></div> <div></div> <div></div> <div></div> <div></div> <div></div> <div></div> <div></div>	<div></div> <div></div> <div></div> <div></div> <div></div> <div></div> <div></div> <div></div> <div></div> <div></div> <div></div> <div></div> <div></div> <div></div> <div></div> <div></div> <div></div> <div></div> <div></div> <div></div> <div></div> <div></div> <div></div> <div></div> <div></div> <div></div>	<div></div> <div></div> <div></div> <div></div> <div></div> <div></div> <div></div> <div></div> <div></div> <div></div> <div></div> <div></div> <div></div> <div></div> <div></div> <div></div> <div></div> <div></div> <div></div> <div></div> <div></div> <div></div> <div></div> <div></div> <div></div> <div></div>	<div></div> <div></div> <div></div> <div></div> <div></div> <div></div> <div></div> <div></div> <div></div> <div></div> <div></div> <div></div> <div></div> <div></div> <div></div> <div></div> <div></div> <div></div> <div></div> <div></div> <div></div> <div></div> <div></div> <div></div> <div></div> <div></div>	<div></div> <div></div> <div></div> <div></div> <div></div> <div></div> <div></div> <div></div> <div></div> <div></div> <div></div> <div></div> <div></div> <div></div> <div></div> <div></div> <div></div> <div></div> <div></div> <div></div> <div></div> <div></div> <div></div> <div></div> <div></div> <div></div>	<div></div> <div></div> <div></div> <div></div> <div></div> <div></div> <div></div> <div></div> <div></div> <div></div> <div></div> <div></div> <div></div> <div></div> <div></div> <div></div> <div></div> <div></div> <div></div> <div></div> <div></div> <div></div> <div></div> <div></div> <div></div> <div></div>	<div></div> <div></div> <div></div> <div></div> <div></div> <div></div> <div></div> <div></div> <div></div> <div></div> <div></div> <div></div> <div></div> <div></div> <div></div> <div></div> <div></div> <div></div> <div></div> <div></div> <div></div> <div></div> <div></div> <div></div> <div></div> <div></div>	<div></div> <div></div> <div></div> <div></div> <div></div> <div></div> <div></div> <div></div> <div></div> <div></div> <div></div> <div></div> <div></div> <div></div> <div></div> <div></div> <div></div> <div></div> <div></div> <div></div> <div></div> <div></div> <div></div> <div></div> <div></div> <div></div>	<div></div> <div></div> <div></div> <div></div> <div></div> <div></div> <div></div> <div></div> <div></div> <div></div> <div></div> <div></div> <div></div> <div></div> <div></div> <div></div> <div></div> <div></div> <div></div> <div></div> <div></div> <div></div> <div></div> <div></div> <div></div> <div></div>	<div></div> <div></div> <div></div> <div></div> <div></div> <div></div> <div></div> <div></div> <div></div> <div></div> <div></div> <div></div> <div></div> <div></div> <div></div> <div></div> <div></div> <div></div> <div></div> <div></div> <div></div> <div></div> <div></div> <div></div> <div></div> <div></div>	<div></div> <div></div> <div></div> <div></div> <div></div> <div></div> <div></div> <div></div> <div></div> <div></div> <div></div> <div></div> <div></div> <div></div> <div></div> <div></div> <div></div> <div></div> <div></div> <div></div> <div></div> <div></div> <div></div> <div></div> <div></div> <div></div>	<div></div> <div></div> <div></div> <div></div> <div></div> <div></div> <div></div> <div></div> <div></div> <div></div> <div></div> <div></div> <div></div> <div></div> <div></div> <div></div> <div></div> <div></div> <div></div> <div></div> <div></div> <div></div> <div></div> <div></div> <div></div> <div></div>	<div></div> <div></div> <div></div> <div></div> <div></div> <div></div> <div></div> <div></div> <div></div> <div></div> <div></div> <div></div> <div></div> <div></div> <div></div> <div></div> <div></div> <div></div> <div></div> <div></div> <div></div> <div></div> <div></div> <div></div> <div></div> <div></div>	<div></div> <div></div> <div></div> <div></div> <div></div> <div></div> <div></div> <div></div> <div></div> <div></div> <div></div> <div></div> <div></div> <div></div> <div></div> <div></div> <div></div> <div></div> <div></div> <div></div> <div></div> <div></div> <div></div> <div></div> <div></div> <div></div>	<div></div> <div></div> <div></div> <div></div> <div></div> <div></div> <div></div> <div></div> <div></div> <div></div> <div></div> <div></div> <div></div> <div></div> <div></div> <div></div> <div></div> <div></div> <div></div> <div></div> <div></div> <div></div> <div></div> <div></div> <div></div> <div></div>	<div></div> <div></div> <div></div> <div></div> <div></div> <div></div> <div></div> <div></div> <div></div> <div></div> <div></div> <div></div> <div></div> <div></div> <div></div> <div></div> <div></div> <div></div> <div></div> <div></div> <div></div> <div></div> <div></div> <div></div> <div></div> <div></div>	<div></div> <div></div> <div></div> <div></div> <div></div> <div></div> <div></div> <div></div> <div></div> <div></div> <div></div> <div></div> <div></div> <div></div> <div></div> <div></div> <div></div> <div></div> <div></div> <div></div> <div></div> <div></div> <div></div> <div></div> <div></div> <div></div>	<div></div> <div></div> <div></div> <div></div> <div></div> <div></div> <div></div> <div></div> <div></div> <div></div> <div></div> <div></div> <div></div> <div></div> <div></div> <div></div> <div></div> <div></div> <div></div> <div></div> <div></div> <div></div> <div></div> <div></div> <div></div> <div></div>	<div></div> <div></div> <div></div> <div></div> <div></div> <div></div> <div></div> <div></div> <div></div> <div></div> <div></div> <div></div> <div></div> <div></div> <div></div> <div></div> <div></div> <div></div> <div></div> <div></div> <div></div> <div></div> <div></div> <div></div> <div></div> <div></div>	<div></div> <div></div> <div></div> <div></div> <div></div> <div></div> <div></div> <div></div> <div></div> <div></div> <div></div> <div></div> <div></div> <div></div> <div></div> <div></div> <div></div> <div></div> <div></div> <div></div> <div></div> <div></div> <div></div> <div></div> <div></div> <div></div>	<div></div> <div></div> <div></div> <div></div> <div></div> <div></div> <div></div> <div></div> <div></div> <div></div> <div></div> <div></div> <div></div> <div></div> <div></div> <div></div> <div></div> <div></div> <div></div> <div></div> <div></div> <div></div> <div></div> <div></div> <div></div> <div></div>	<div></div> <div></div> <div></div> <div></div> <div></div> <div></div> <div></div> <div></div> <div></div> <div></div> <div></div> <div></div> <div></div> <div></div> <div></div> <div></div> <div></div> <div></div> <div></div> <div></div> <div></div> <div></div> <div></div> <div></div> <div></div> <div></div>	<div></div> <div></div> <div></div> <div></div> <div></div> <div></div> <div></div> <div></div> <div></div> <div></div> <div></div> <div></div> <div></div> <div></div> <div></div> <div></div> <div></div> <div></div> <div></div> <div></div> <div></div> <div></div> <div></div> <div></div> <div></div> <div></div>	<div></div> <div></div> <div></div> <div></div> <div></div> <div></div> <div></div> <div></div> <div></div> <div></div> <div></div> <div></div> <div></div> <div></div> <div></div> <div></div> <div></div> <div></div> <div></div> <div></div> <div></div> <div></div> <div></div> <div></div> <div></div> <div></div>	<div></div> <div></div> <div></div> <div></div> <div></div> <div></div> <div></div> <div></div> <div></div> <div></div> <div></div> <div></div> <div></div> <div></div> <div></div> <div></div> <div></div> <div></div> <div></div> <div></div> <div></div> <div></div> <div></div> <div></div> <div></div> <div></div>	<div></div> <div></div> <div></div> <div></div> <div></div> <div></div> <div></div> <div></div> <div></div> <div></div> <div></div> <div></div> <div></div> <div></div> <div></div> <div></div> <div></div> <div></div> <div></div> <div></div> <div></div> <div></div> <div></div> <div></div> <div></div> <div></div>	<div></div> <div></div> <div></div> <div></div> <div></div> <div></div> <div></div> <div></div> <div></div> <div></div> <div></div> <div></div> <div></div> <div></div> <div></div> <div></div> <div></div> <div></div> <div></div> <div></div> <div></div> <div></div> <div></div> <div></div> <div></div> <div></div>	<div></div> <div></div> <div></div> <div></div> <div></div> <div></div> <div></div> <div></div> <div></div> <div></div> <div></div> <div></div> <div></div> <div></div> <div></div> <div></div> <div></div> <div></div> <div></div> <div></div> <div></div> <div></div> <div></div> <div></div> <div></div> <div></div>	<div></div> <div></div> <div></div> <div></div> <div></div> <div></div> <div></div> <div></div> <div></div> <div></div> <div></div> <div></div> <div></div> <div></div> <div></div> <div></div> <div></div> <div></div> <div></div> <div></div> <div></div> <div></div> <div></div> <div></div> <div></div> <div></div>	<div></div> <div></div> <div></div> <div></div> <div></div> <div></div> <div></div> <div></div> <div></div> <div></div> <div></div> <div></div> <div></div> <div></div> <div></div> <div></div> <div></div> <div></div> <div></div> <div></div> <div></div> <div></div> <div></div> <div></div> <div></div> <div></div>	<div></div> <div></div> <div></div> <div></div> <div></div> <div></div> <div></div> <div></div> <div></div> <div></div> <div></div> <div></div> <div></div> <div></div> <div></div> <div></div> <div></div> <div></div> <div></div> <div></div> <div></div> <div></div> <div></div> <div></div> <div></div> <div></div>	<div></div> <div></div> <div></div> <div></div> <div></div> <div></div> <div></div> <div></div> <div></div> <div></div> <div></div> <div></div> <div></div> <div></div> <div></div> <div></div> <div></div> <div></div> <div></div> <div></div> <div></div> <div></div> <div></div> <div></div> <div></div> <div></div>	<div></div> <div></div> <div></div> <div></div> <div></div> <div></div> <div></div> <div></div> <div></div> <div></div> <div></div> <div></div> <div></div> <div></div> <div></div> <div></div> <div></div> <div></div> <div></div> <div></div> <div></div> <div></div> <div></div> <div></div> <div></div> <div></div>	<div></div> <div></div> <div></div> <div></div> <div></div> <div></div> <div></div> <div></div> <div></div> <div></div> <div></div> <div></div> <div></div> <div></div> <div></div> <div></div> <div></div> <div></div> <div></div> <div></div> <div></div> <div></div> <div></div> <div></div> <div></div> <div></div>	<div></div> <div></div> <div></div> <div></div> <div></div> <div></div> <div></div> <div></div> <div></div> <div></div> <div></div> <div></div> <div></div> <div></div> <div></div> <div></div> <div></div> <div></div> <div></div> <div></div> <div></div> <div></div> <div></div> <div></div> <div></div> <div></div>	<div></div> <div></div> <div></div> <div></div> <div></div> <div></div> <div></div> <div></div> <div></div> <div></div> <div></div> <div></div> <div></div> <div></div> <div></div> <div></div> <div></div> <div></div> <div></div> <div></div> <div></div> <div></div> <div></div> <div></div> <div></div> <div></div>	<div></div> <div></div> <div></div> <div></div> <div></div> <div></div> <div></div> <div></div> <div></div> <div></div> <div></div> <div></div> <div></div> <div></div> <div></div> <div></div> <div></div> <div></div> <div></div> <div></div> <div></div> <div></div> <div></div> <div></div> <div></div> <div></div>	<div></div> <div></div> <div></div> <div></div> <div></div> <div></div> <div></div> <div></div> <div></div> <div></div> <div></div> <div></div> <div></div> <div></div> <div></</div>

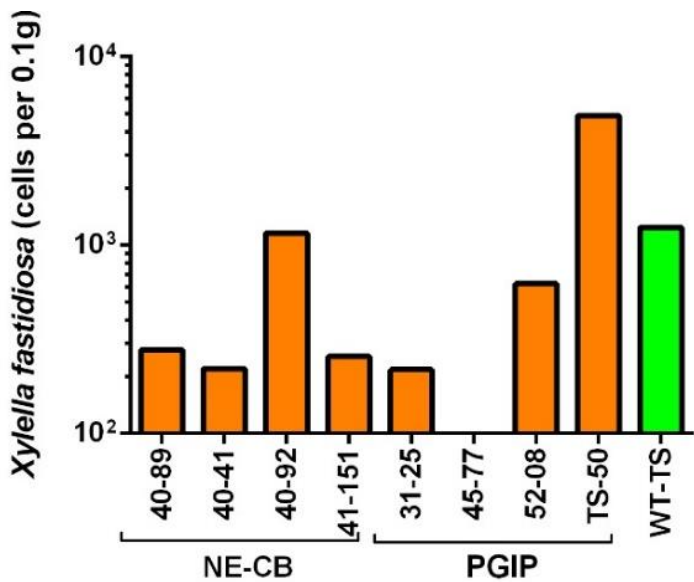


Figure 1. *Xf* quantification by qPCR of Solano grafted individual transgenic canes inoculated in spring 2014 and harvested in summer 2014 and fall 2015.

***Xf* quantification by qPCR of inoculated grafted individual transgenic canes.**

On July 22, 2014 and September 15, 2015, one 2014-inoculated cane from each grafted transgenic plant was harvested for quantification of *Xf* by qPCR using an Applied Biosystems SYBR green fluorescence detection system. *Xf* DNA was extracted using a modified CTAB (hexadecyltrimethyl-ammonium- bromide) method that allowed us to obtain DNA of a quantity and quality suitable for qPCR. The *Xf* 16s primer pair (forward 5'-AATAAATCATAAAAAAATCGCCAACATAAACCCA-3' and (reverse 5'-AATAAATCATAACCAGGCGTCCTCACAAGTTAC-3') was used for *Xf* quantification. qPCR standard curves were obtained using concentrations of *Xf* ranging from 10^2 to 10^6 cells per 0.1 g tissue. *Xf* was detected in grafted transgenic vines, but *Xf* titers were lower than in grafted control grapevines (**Figure 1; see above**).

Grapevine Survival after sequential years of *Xylella fastidiosa* inoculation

Grapevine survival of wild-type Thompson Seedless scions that were grafted to protective transgenic Thompson Seedless rootstocks and inoculated with *Xylella fastidiosa* in 2013, 2014, and 2015 was assessed in the Fall of both 2015 and 2016 using a score of 1 to 5, where: 1 = Healthy vigorous grapevine; 2 = Slightly reduced growth. Symptoms on inoculated canes; 3 = Reduced growth. Symptoms on both inoculated and uninoculated canes; 4 = Highly symptomatic, ends of canes dying back and 5 = Dead plant. Shown in Figure 2 below is the assessment in the fall of 2015, the transgenic lines expressing either CAP and PGIP were able to trans graft protect TS scions from disease development. By the fall of 2016 all of the TS were dead while the transgenics survived as shown in the Fig below.

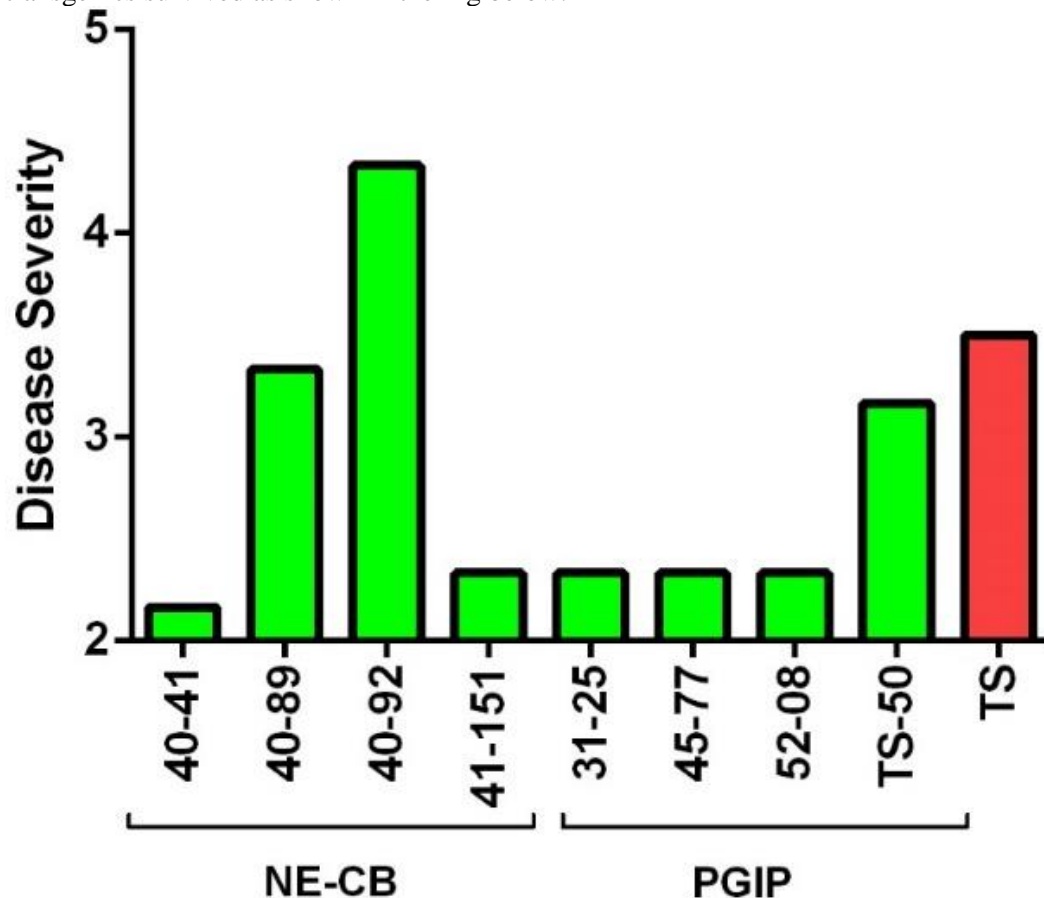


Figure 2. Severity or absence of PD symptoms for all Solano grafted inoculated grapevines on fall 2015.

Spring Buddbreak Evaluation

During the course of the field trial, it was observed that buds on infected canes would fail to push after dormancy and a large portion of the buds that did break would dry up and die soon after. In the spring of 2015 this observation was measured by counting every bud on previously infected canes and monitored to see if it succeeded in developing into a new cane. Both transgenic and wild-type plants were evaluated. Transgenic plants had a much higher success rate of buds developing into new canes than did wild-type Thompson seedless (**Figure 3**) had some low level of bud break much lower than that observed for the transgenic lines.

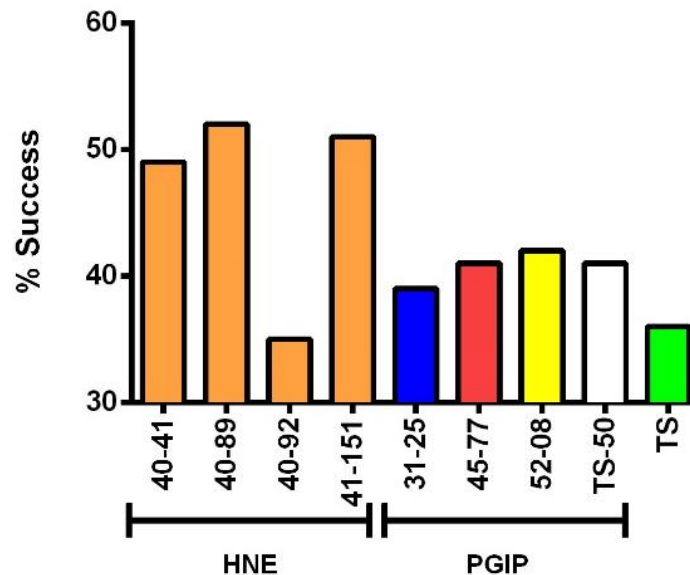


Figure 3. Comparative analysis of spring bud break in control compared to transgenic lines inoculated with *Xf* in spring 2015.

Objective 1. Complete the current round of efficacy testing of *in planta*-expressed chimeric antimicrobial proteins for the ability to clear *Xf* infection in xylem tissue and through the graft union in grapevines grown under field conditions.

Activity 2. Conduct greenhouse and field evaluation of CAP-expressing 101-14 and 1103 rootstocks.

Conduct greenhouse and field evaluation of CAP-expressing 101-14 and 1103 rootstocks. This activity focused on greenhouse and field testing of six vector constructs that are in the plant transformation pipeline on two commercially relevant rootstocks, 101-14 and 1103 (Christensen, 2003).

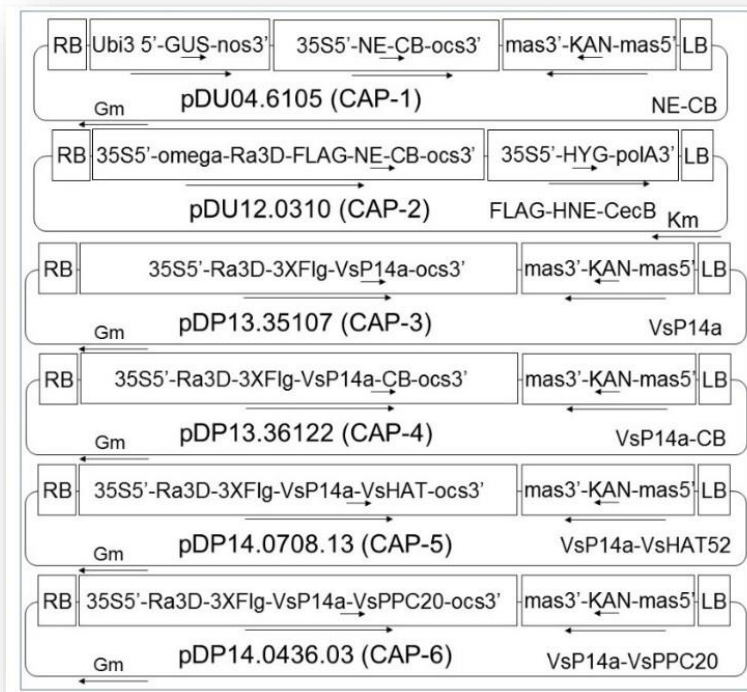


Figure 4. CAP vectors designed to test the original and grapevine CAP components, and used to create transgenic 101-14 and 1103 rootstocks that will be tested in greenhouse and field.

The components present in these constructs are shown in **Figure 4 above**. The construction of CAP-1 was

described earlier (Dandekar et al., 2012a) and the components mostly from grapevine and construction of CAP-2, CAP-3, CAP-4, CAP-5 and CAP-6 shown in **Figure 4** have been previously described (Chakraborty et al., 2014b, Dandekar et al., 2012c; Dandekar et al., 2013 and Dandekar et al., 2014). The grapevine transformation methods for the 101-14 and 1103 rootstocks have been described previously (Dandekar et al., 2011 and Dandekar et al., 2012b) but were further improved by David Tricoli in the UC Davis Plant Transformation Facility who did the transformation of all of the binary vector constructs shown in **Figure 4**. The transgenic plants obtained from the facility propagated for testing described in detail below. The transformation of the two rootstock species with all six CAP constructs was initiated in 2014 and the selection and regeneration of plants is ongoing. The field introduction of these rootstocks is aimed at evaluating their efficacy in protecting grafted sensitive Chardonnay grapevine variety from developing PD. Table 2 indicates the number of lines that are slated for field introduction in 2018.

Table 2. Pierce disease resistance CAP-expressing transgenic rootstocks advancing to field trial.

CAP Designation	Binary Vector	Gene	Field Test (Lines)	
			101-14	1103
CAP-1	pDU04.6105	HNE-CB	6	0
CAP-2	pDU12.0310	New HNE-CB	0	8
CAP-3	pDP13.35107	VsP14a	8	0
CAP-4	pDp13.36122	VsP14a-CB	2	0
CAP-5	pDP14.0708.13	VsP14a-VsHat52	1	3
CAP-6	pDP14.0436.03	VsP14a-PPC20	7	4

To determine the best potential candidates for challenging in the new field trial, a series of tests were performed. Each transformed plantlet received from the UC Davis Plant Transformation Facility is initially screened by PCR to confirm the presence of the transgene (**Figure 5**: see below).



Figure 5. Validation of the transgenic 101-14 and 1103 grapevine rootstocks for the expression of CAP constructs. Shown here is the amplification and detection of the CAP gene sequences.

Next, performed is a protein extraction on each plant that has been confirmed to have the transgene via PCR and two SDS gels are run to observe the total protein and the level of protein being expressed by the transgene. Shown below (**Figure 6**) on the left is an SDS gel of the total proteins isolated from CAP-6 expressing lines and on the right is a western blot generated using an antibody for the detection of the CAP-6 lines which show a single reactive protein corresponding to CAP-6.

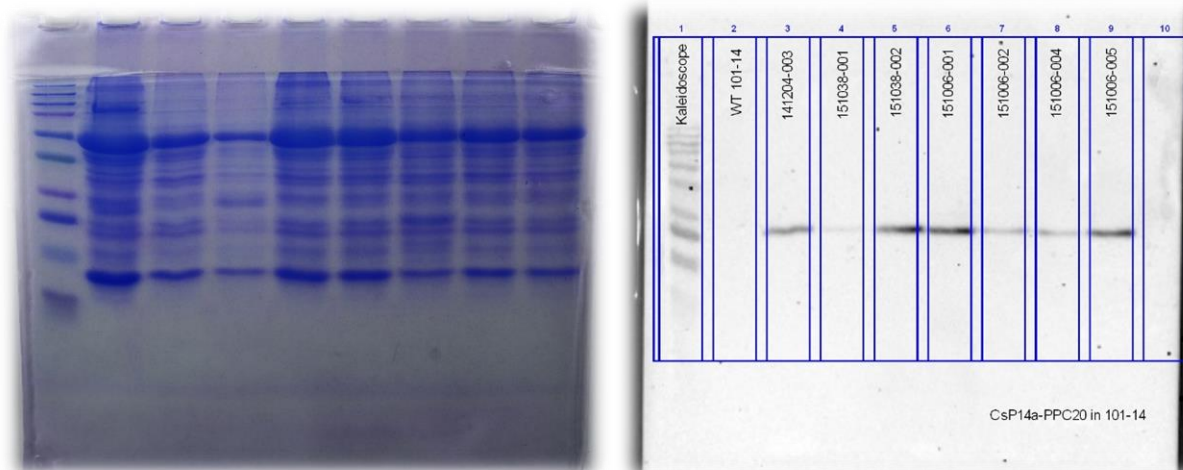


Figure 6. Validation of the transgenic 101-14 and 1103 grapevine rootstocks for the expression of CAP constructs containing grapevine components. Shown here is the detection of the VsP14a protein present CAP transgenic lines.

Greenhouse Screening of Next Generation Plants (Activity 2 Cont.).

As plants are received from the UC Davis Plant Transformation Facility and undergo laboratory testing, they also undergo a disease screening in the greenhouse. Once a plant is received from the Transformation Facility it is allowed to grow in the greenhouse until it reaches a size where it can be clonally propagated to produce enough replicates for a disease screening by manual inoculation of the bacterium *Xylella fastidiosa* (Figure 7).



Figure 7: Transgenic 110-14 and 1103 lines expressing (CAP-2 to 6) are in the cloning/growing/inoculating pipeline for greenhouse inoculation with *Xf*.

The clones are trained into a two-cane system and inoculated on one of the canes with *Xf*. Plants are inoculated with 20uL of *Xf* at roughly three nodes above the fork in the canes and eight leaves below the top of the cane. Then the plant is turned over and inoculated with another 20uL of *Xf* directly behind the first inoculation. The *Xf* inoculum is prepared as described earlier (Dandekar et al., 2012a). The transgenic rootstocks successfully inoculated as described above are evaluated for PD symptoms 12 weeks post inoculation when the first disease symptoms appear, and subsequently every two weeks thereafter until 18 weeks post inoculation. A scoring system of 1 to 5 was used with values of: 1 = No visible disease symptoms (Good); 2 = Disease symptoms on

less than 4 leaves (Good/OK), 3 = Disease symptoms exhibited on 50 percent the cane (4 leaves, OK); 4 = Disease symptoms exhibited on 75 percent of the cane (6 leaves, OK/Bad) and 5 = Symptoms stretching the entire length of inoculate cane (8 leaves, Bad). This scoring method worked for observing the spread of PD symptoms but did not account for the severity of symptoms so a new more detailed scoring system was developed for the analysis of Pierce's Disease symptoms during greenhouse screening. A scoring system of 0 to 5 was used to score each leaf with values of: 0 = No visible disease symptoms; 1 = Disease symptoms just appearing with < 10% leaf scorch, 2 = 10-25% of leaf scorched; 3 = 25-50% of leaf scorched, 4 = 50-75% of leaf scorched and 5 = 75-100% of leaf scorched or only petiole remaining (**Figure 8**). Pierce's disease symptoms were scored using the detailed scoring system. Results of the screening process of CAP-5 plants in the 101-14 background is shown in **Figure 9**.

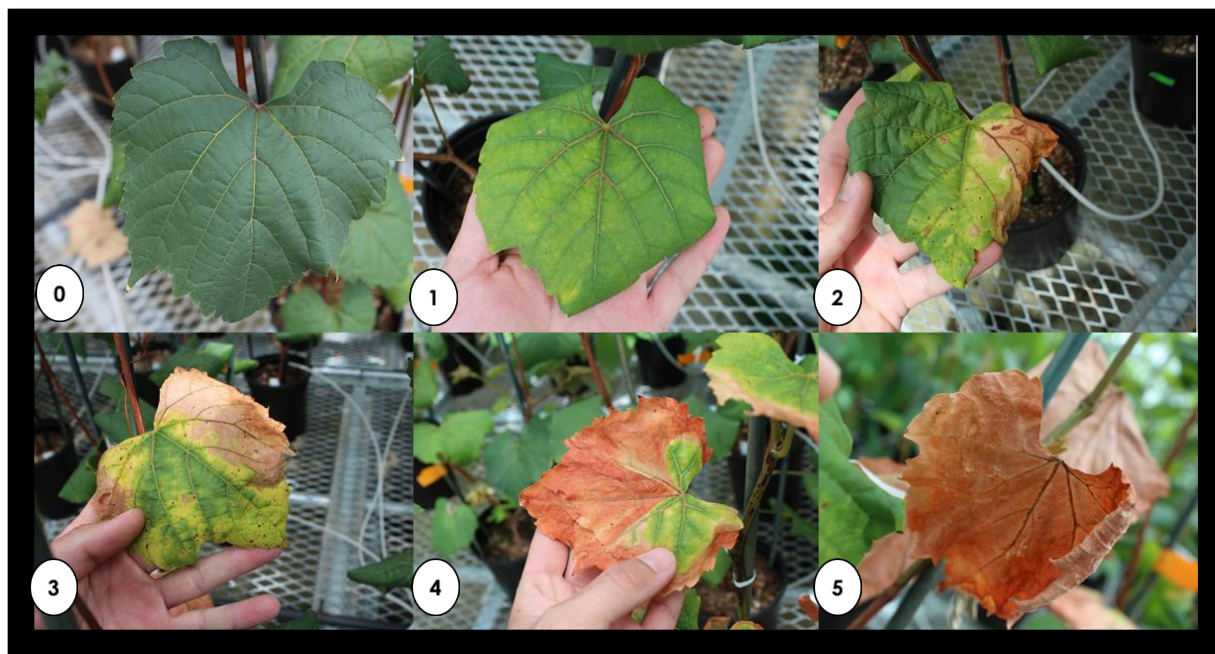


Figure 8: Development of a modified 1-5 disease scoring system.

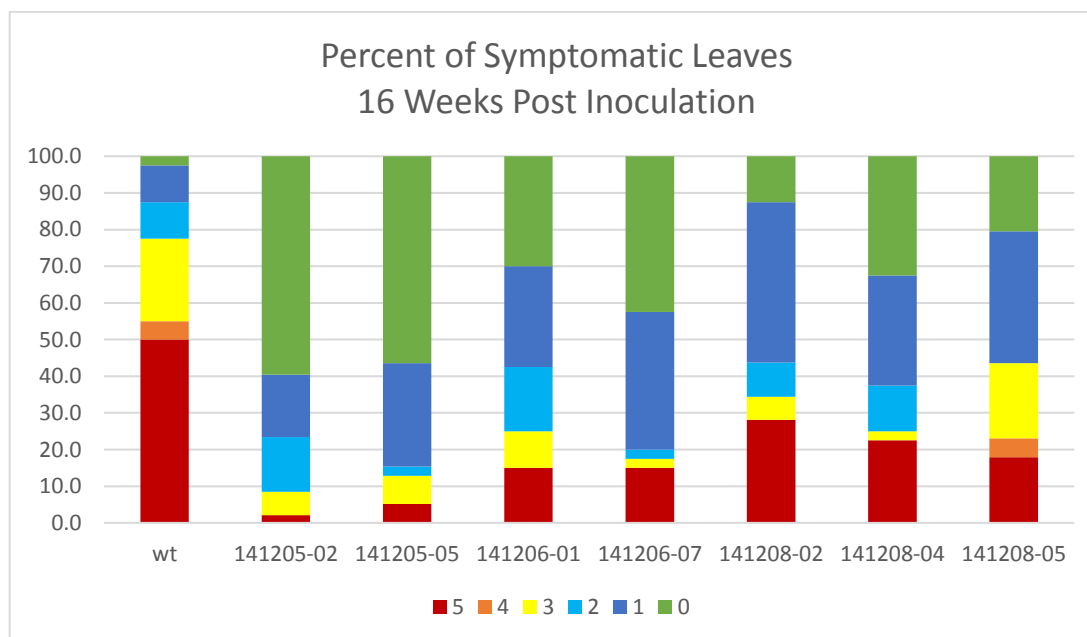


Figure 9: The last data point collected while screening 1103 transgenic rootstocks expressing either CAP-5 or CAP-6.

Preparation of the New Field Trial.

All proper permitting has been acquired from the regulatory agencies for the new field trial. Field irrigation and trellising are in the process of being established with an expected planting date planned for late Spring/early Summer 2018.

Table 3 details the number of lines per construct that will be introduced into the field this year, with additional plants continuing to work their way through the pipeline for next year's planting.

Pedigree	Gene	CAP#	# of Lines	Scion Type	Replicates per Line
101-14	OldHNE	1	6	Char04	6
1103	New HNE	2	8	Char04	6
101-14	VsP14a	3	8	Char04	6
101-14	VsP14a-CB	4	2	Char04	6
101-14	VsP14a-VsHAT	5	1	Char04	6
1103	VsP14a-VsHAT	5	3	Char04	6
101-14	VsP14a-PPC20	6	7	Char04	6
1103	VsP14a-PPC20	6	4	Char04	6
TS	ntPGIP		4	Char04	6
TS	chiPGIP		4	Char04	6
TS	mPGIP		4	Char04	6
TS	ramyPGIP		4	Char04	6
TS	xspPGIP		4	Char04	6

Plants to be introduced to the field in 2018 that have successfully made it through our testing pipeline. All plants will be grafted with commercially relevant and PD sensitive scion Chardonnay 04.



Shown above in Figure 10. 1) Sticks collected during dormancy. 2) Individual stick that has been de-budded, tagged, dipped in wax ready for rooting hormone and rooting. 3) Sticks rooting. 4) Sticks rooted and breaking dormancy. 5) Rooted clone. 6) Cones potted up awaiting grafting before being planted in field.

Publications produced and pending, and presentations made related to the funded project.

Dandekar, A.M., A.M. Ibanez and A. Jacobson. 2017. Field testing transgenic grapevine rootstocks expressing chimeric antimicrobial protein and polygalacturonase-inhibiting protein. Research Progress Reports: Pierce's Disease and other Designated Pests and Diseases of Grapevines. December 2017. California Department of Food and Agriculture. pp. 20-28.

Dandekar, A.M., A.M. Ibanez, and A. Jacobson. 2016. Field testing transgenic grapevine rootstocks expressing chimeric antimicrobial protein and polygalacturonase-inhibiting protein. Proceedings of Pierce's Disease Research Symposium held at December 12-14, 2016 at the Marriot Courtyard Hotel San Diego California. pp. 35-42.

Dandekar, A.M. 2016. Field testing transgenic grapevine rootstocks expressing chimeric antimicrobial protein and polygalacturonase-inhibiting protein. Oral presentation at the Pierce's Disease Research Symposium. December 13, 2016, San Diego California.

Dandekar, A.M., D. Gilchrist, P. Rolshausen, A.M. Ibanez, A. Jacobson D. Dolan, R. Just and H. Gouran. 2015. Chimeric antimicrobial protein and polygalacturonase-inhibiting protein transgenic grapevines filed trial. Research Progress Reports: Pierce's Disease and Other Designated Pests and Diseases of Winegrapes. December 2015. pp. 18-26.

Dandekar, A.M. D. Gilchrist, T. Miller, A.M. Ibanez, D. Dolan and H. Gouran. 2014. Chimeric antimicrobial protein and polygalacturonase-inhibiting protein transgenic grapevines filed trial. Proceedings of Pierce's Disease Research Symposium held December 15-17, 2014 at the Sheraton Grand Sacramento Hotel, Sacramento, California. pp. 106-117.

Dandekar, A.M. D. Gilchrist, T. Miller, A.M. Ibanez, D. Dolan and H. Gouran. 2013. Chimeric antimicrobial protein and polygalacturonase-inhibiting protein transgenic grapevines filed trial. Proceedings of Pierce's Disease Research Symposium held December 16-18, 2013 at the Hiatt Regency Hotel, Sacramento, California. pp. 95-100.

Dandekar, A.M., H. Gouran, A.M. Ibáñez, S.L. Uratsu, C.B. Aguero, S. McFarland, Y. Borhani, P.A. Feldstein, G. Bruening, R. Nascimento, L.R. Goulart, P.E. Pardington, A. Chaudhary, M. Norvell, E. Civerelo and G. Gupta. 2012. An engineered innate defense protects grapevines from Pierce's disease. Proc. Nat. Acad. Sci. USA 109: 3721-3725.

Dandekar, A.M., A.M. Ibáñez, D. Dolan, H. Gouran, D. Gilchrist and T. Miller. 2012. Chimeric antimicrobial protein and polygalacturonase-inhibiting protein transgenic grapevines field trial. Proceedings of the Pierce's Disease Research Symposium, Dec 2012, pp. 94-103.

Dandekar, A.M., A.M. Ibáñez, H. Gouran, S. Uratsu, D. Gilchrist and T. Miller. 2011. Chimeric antimicrobial protein and polygalacturonase-inhibiting protein transgenic grapevines field trial. Proceedings of the Pierce's Disease Research Symposium, Dec 2011, pp. 101-106.

Dandekar, A.M., A.M. Ibáñez, H. Gouran, S. Uratsu, D. Gilchrist and T. Miller. 2010. Chimeric antimicrobial protein and polygalacturonase-inhibiting protein transgenic grapevines field trial. Proceedings of the Pierce's Disease Research Symposium, Dec 2010, pp. 161-164.

Research relevance statement, indicating how this research will contribute toward finding solutions to Pierce's disease in California.

This proposal is a continuation of a project to test expression of a chimeric anti-microbial protein (CAP) and polygalacturonase inhibitory protein (PGIP) as a means to clear and block the movement of *Xylella fastidiosa* and provide resistance to Pierce's disease (PD). Rootstocks (Thompson Seedless, TS) expressing these proteins individually are currently being evaluated in the field, this study will build on this important research. TS rootstock lines expressing either CAP or PGIP are showing promise in protecting against PD that is being validated with in-field inoculations. Since TS is not a rootstock these genes must be tested in a commercially

relevant rootstock that is what will be accomplished in this research. This research will test transgenic rootstocks developed in two previously funded projects (11- 0240-SA; 2011-2013 and project 12-130-SA; 2012-2014) for providing trans-graft protection against PD. The greenhouse and field testing of these rootstocks is aimed at evaluating different lines to identify those with good efficacy in protecting grafted, sensitive scion cultivar Chardonnay from developing PD. Elite rootstock lines will be good candidates for commercialization.

Layperson summary of project accomplishments.

This project is a continuation to evaluate the field efficacy of transgenic grapevine rootstocks expressing a chimeric anti-microbial protein (CAP) or a polygalacturonase inhibitory protein (PGIP) to provide protection to the grafted scion variety from developing Pierce's Disease (PD). We concluded a field evaluation where four CAP and four PGIP expressing Thompson Seedless (TS) were tested as rootstocks to protect grafted wild type TS scions. These plants were infected with *Xylella fastidiosa* (Xf) in 2012, 2013, 2014 and 2015 and evaluated each year for their ability to provide resistance to PD. Our conclusion is that the transgenic rootstocks were able to provide transgraft protection to the scion; they showed less symptoms, higher survival and harbored a lower titer of the pathogen than grafted untransformed controls. Since TS is not a commercially relevant rootstock we have now begun testing the field efficacy of this strategy by expressing different CAP proteins in commercially relevant rootstocks 110-14 and 1103. Green house evaluations were initiated in 2016 and field evaluations will begin in 2018. Elite rootstock lines identified in this project will be good candidates for commercialization.

Status of funds.

We have expended all the funds available for the period July 1, 2017 to June 30 2018.

Summary and status of intellectual property associated with the project.

An invention disclosure will be made for a plant patent once an elite transgenic rootstock line demonstrates excellent field efficacy in protecting a grafted sensitive scion from coming down with PD.

Literature cited.

Agüero, C.B., Uratsu, S.L., Greve, L.C., Powell, A.L.T., Labavitch, J.M., Meredith, C.P. and Dandekar, A.M. 2005. Evaluation of tolerance to Pierce's Disease and Botrytis in transgenic plants of *Vitis vinifera* L. Expressing the Pear PGIP gene. *Molecular Plant Pathology* 6(1) 43-51.

Agüero, C.B., C.P. Meredith, and A.M. Dandekar. 2006. Genetic transformation of *Vitis vinifera* L. cvs. 'Thompson Seedless' and 'Chardonnay' with the pear PGIP and GFP encoding genes. *Vitis* 45:1-8.

Almeida, R.P.P., and A.H. Purcell. 2003. Biological traits of *Xylella fastidiosa* strains from grapes and almonds. *App. Env. Microbiol.* 68:7447-7452.

Chakraborty S., R. Minda, L. Salaye, A.M. Dandekar, S.K. Bhattacharjee and B.J. Rao. 2013. Promiscuity-based enzyme selection for rational directed evolution experiments. In, J. Samuelson (ed.), "Enzyme Engineering: Methods and Protocols". Pub: Springer New York. *Methods in Molecular Biology*. 978: 205-216.

Chakraborty, S., B. Rao and A. Dandekar. 2014a. PAGAL - properties and corresponding graphics of alpha helical structures in proteins. *F1000Research* 3.

Chakraborty S, Phu M, Rao B, Asgeirsson B, Dandekar A. 2014b. The PDB database is a rich source of α -helical anti-microbial peptides to combat disease causing pathogens. *F1000Research* 3.

Christensen, L. 2003. Rootstock Selection. Pages 12-15 in: *Wine Grape Varieties in California*. University of California Agricultural and Natural Resources.

Dandekar, A.M., A. Walker, A.M. Ibanez, S.L. Uratsu, K. Vahdati, D. Tricoli and C. Agüero. 2011. Engineering multi-component resistance to Pierce's Disease in California grapevine rootstocks. *Pierce's Disease Research Symposium*, December 13-15, 2011. The Sheraton Grand Sacramento Hotel, Sacramento, California. pp. 107-110.

Dandekar, A.M., H. Gouran, A.M. Ibáñez, S.L. Uratsu, C.B. Agüero, S. McFarland, Y. Borhani, P.A. Feldstein, G. Bruening, R. Nascimento, L.R. Goulart, P.E. Pardington, A. Chaudhary, M. Norvell, E. Civerelo and G. Gupta. 2012a. An engineered innate defense protects grapevines from Pierce's disease. *Proc. Nat. Acad. Sci. USA* 109:3721-3725.

Dandekar, A.M., A. Walker, A.M. Ibanez, K.Q. Tran, D. Gunawan, S.L. Uratsu, K. Vahdati, D. Tricoli and C. Agüero. 2012b. Engineering multi-component resistance to Pierce's Disease in California grapevine rootstocks. *Pierce's Disease Research Reports*, December 2012. pp. 104-108.

Dandekar, A.M. A.M. Ibanez, H. Gouran, M. Phu, B.J. Rao and S Chakraborty. 2012c. Building the next generation chimeric antimicrobial protein to provide rootstock-mediated resistance to Pierce's Disease in grapevines. *Pierce's Disease Research Reports*, December 2012. pp. 89-93.

Dandekar, A.M., H. Gouran, S Chakraborty, M. Phu, B.J. Rao and A.M. Ibanez,. 2013. Building the next generation chimeric antimicrobial protein to provide rootstock-mediated resistance to Pierce's Disease in grapevines. *Proceedings of Pierce's Disease Research Symposium held December 16-18, 2013 at the Hiatt Regency Hotel, Sacramento, California*. pp. 89-94.

Dandekar, A.M., H. Gouran, S Chakraborty, M. Phu, B.J. Rao and A.M. Ibanez. 2014. Building the next generation chimeric antimicrobial protein to provide rootstock-mediated resistance to Pierce's Disease in grapevines. *Proceedings of Pierce's Disease Research Symposium held December 15-17, 2014 at the Sheraton Grand Sacramento Hotel, Sacramento, California*. pp. 99-105.